

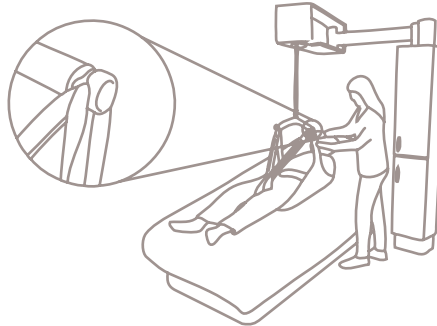
## HOW TO USE THE INTEGRALIFT HOIST:



**1**

### ACTIVATE

Open closet and pull out the lift.  
Position the lift above the user.

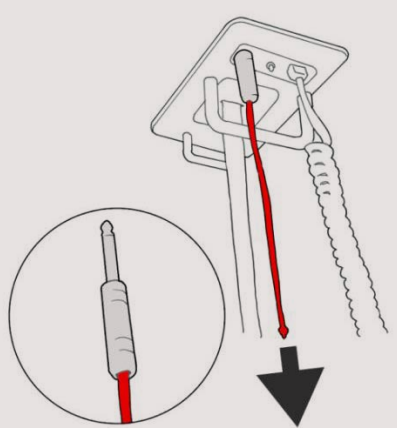


**2**

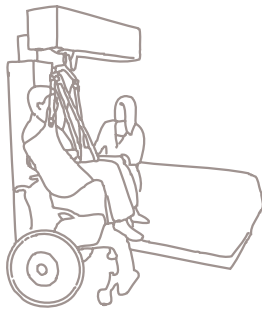
### PLACE THE SLING

Position the sling under the user.  
Hook the sling on the lifting bar.

### EMERGENCY STOP:



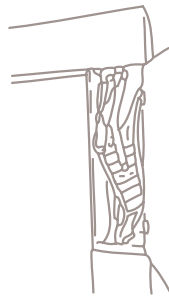
Pull the red string.



**3**

### THE TRANSFER

Lift and position the user over the chair.  
Lower the user into the chair.

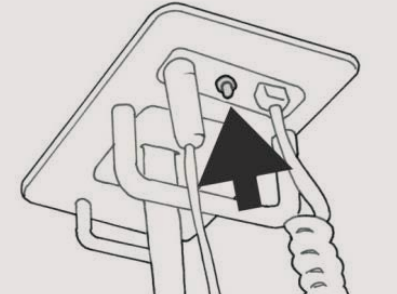


**4**

### COMPLETED

Place the lifting bar and the remote in their designated places. Swing the lift back to its wall position. Put the sling back in the closet.

### EMERGENCY LOWERING:



If the lifter should stop working, press the emergency lowering button until the user is lowered safely on the bed or chair

### SAFE WORKING LOAD:

**230kg**

### MAINTENANCE

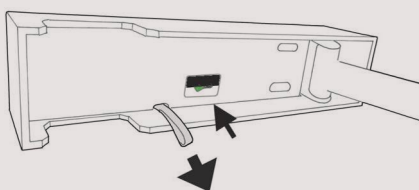
- Read User Manual



### SIMPLE TROUBLESHOOTING:

- Battery charger is connected to an electric socket?
- Remote control connected?
- Emergency stop connected?

### MECHANICAL EMERGENCY LOWERING:



If the electrical emergency lowering fails, use mechanical lowering: On the rear of the top cabinet there is a small window with a switch (stand on a footstool).

1. Flick the switch from Green to Black.
2. Pull the black handle intermittent, keeping the user at a secure speed.

### SAFETY:



- Read the User Manual
- Make sure the sling loops are properly attached to the spreader bar